

AFRICA'S LEADER IN

**FUEL &
ENERGY**



ORCA

B-BBEE | LEVEL 2

FUEL SOLUTIONS

SOLUTIONS



orcafuels.co.za

ABOUT US

Level 2 BBBEE Contributor | 100% Woman Owned

Orca Africa is Africa's leading innovative fuel storage solutions company.

We are the leading manufacturers of engineered self-bunded tanks, remote refuelling systems, bulk fuel farms and plug-and-use dispensing solutions.

From diesel, petrol, lubricants, HFO, Jet A1 and Avgas storage, Orca Africa will design and manufacture a unique, robust and turnkey solution to meet your site requirements.

Our dedicated sales team, with the support of our in-house engineers, technicians and site teams are at your service to design, engineer and deliver custom developed fuel and energy solutions across the African continent.

As a proudly South African, women-owned and managed company, we pride ourselves on providing our customers with the highest quality products delivered in a timely and professional manner.

We understand the challenges of managing and storing fuel in the African environment. Our team's attention to detail throughout the product design, delivery, installations, and maintenance, have brought Orca Africa to the front of the fuel storage industry with our innovative fuel storage solutions.

Welcome to the world of Orca Africa.

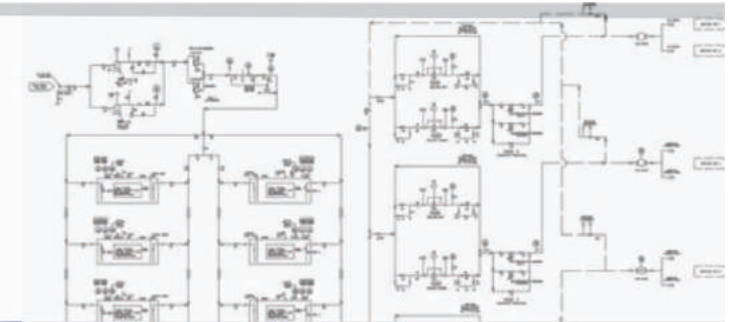


CAPABILITIES

Our quality products and professional services

Design & Engineering

Orca Africa's in-house, specialist engineering and drafting team has the capability to prototype, develop and tailor projects prior to production.



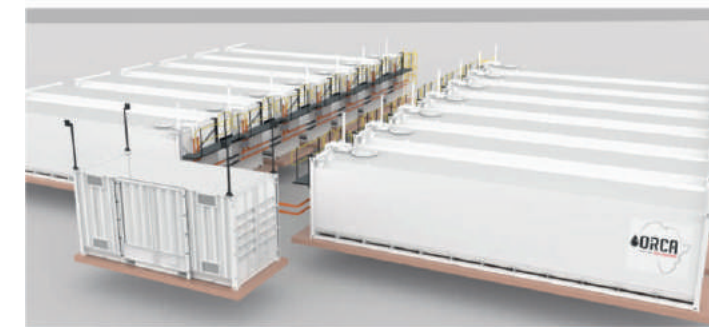
Manufacture & Fabrication

Our dedicated factory and pump facility allows Orca Africa to serve our customers directly with no middle man between the factory and your facility.



Fuel Tank Supply

Orca Africa is an industry-leading fuel tank supplier and provider of self-bunded bulk fuel tank solutions.



Fuel Farms

We provide modular, scalable, intelligently designed self-bunded tank farms with plug-and-play refuelling and monitoring equipment.



Installations

Our fuel tank installation experts offer market leading onsite installation and commissioning services.

INDUSTRIES

Servicing professional industries for over 18 years



Orca Africa takes fuel logistics to the highest level in quality, professionalism and experience, for:

- FUEL FARMS
- ON-SITE REFUELLING
- POWER GENERATION
- PORTABLE ENERGY
- AVIATION
- FUEL MANAGEMENT
- FILTRATION
- PORTABLE ENERGY



On Site Refuelling

Provides hassle-free, on site refuelling for large /small scale construction, mining and logistics equipment without the need for civil work or bund walls on site. Easy to relocate. Minimise refuelling distance and optimise operations.



Fuel Farms

Interconnecting tanks together for near unlimited capacity. Increase capacity as fuel requirement increases with 'kit-form' pipework. Easy to relocate or split tanks and fuel locations as the project requirements change.



Portable Energy

Rapid deployment for standby power, along with extended, uninterrupted running times.

STORAGE SOLUTIONS

The benefits of an Orca Africa storage system

Double-walled Fuel Storage Tanks (from 1,000 to 107,400 Litres)

We offer unbeatable quality and immense versatility for fast and flexible storage and dispensing solutions. Compatibility with a wide range of pumps and dispensers ensures a unique solution to suit your requirements. You won't find a safer, more reliable, or cost-efficient tank than with Orca Africa.

Longer-lasting, Portable Storage Tanks

Our tanks last longer thanks to stainless steel fittings and an extra thick protective coating to help prevent rust and corrosion. Additionally they are designed with a Safe Fuel Limit (SFL) which is up to 10% greater than standard tanks of similar capacity. This means that each tank goes longer in between refills, giving you long term savings in labour and admin costs. This benefit is especially useful for tanks in remote locations.

Easy-to-use Fuel Tanks

It's easy to get inside an O-series for cleaning and inspection, as they come with dual manways so there is no need to disconnect the pump. Fittings have been specially positioned and designed for ease of dispensing, based on our practical experience with fuel tanks in many different situations. All Orca Africa Fuel Storage Tanks are certified to prove they comply with current health and safety regulations.

Portable for easy transport and relocation

Our storage tanks can be transported by road, rail or sea, and come in various sizes, all of which fit within a standard ISO shipping container. That makes it easy to get them on site fast, or relocate as and when refuelling needs change. Installation is easy, as our portable fuel storage tanks can be sited almost anywhere, with no requirement for concrete bund walls or construction.

Designed with your specific needs in mind

All Orca Africa Fuel tanks are manufactured to our own specific designs in a state-of-the-art factory. This gives you the flexibility to order a tank specially adapted for your particular requirements. Please feel free to discuss your needs with us, and we'll work with you to develop and specify a tank that's exactly right for your project.

Complete Fuel Management Service

At Orca Africa we offer turnkey refuelling solutions to make sure you get the best tank and dispensing system to match your requirements. You'll receive sound advice from experts with years of practical experience in both fuel supply and distribution.



O-SERIES

Self-bunded Bulk Fuel Storage Tanks

O-Series Tanks offer double-walled storage tanks for combustible liquids, as well as other hazardous and non-hazardous liquids, from 11,240 up to 107,400 litres.



CURVED TANK ROOF



COMPATIBILITY



DIESEL



GASOLINE



LUBRICANTS



SOLVENTS

The Orca Africa O-Series is a premium fuel storage solution designed for harsh operating environments with minimal site preparation.

Pressed corners and a reinforced top means a robust tank for your fuel storage needs. The main points in this design are a curved tank roof finish, greater capacity for safe fill and the ability to see under the tank.

O-Series tanks are constructed to international ISO container footprints for ease of transport and transfer. The standard footprints are 20, 40 or 48 foot utilising the container lock dimensions and ensures ease of transport, saving your business time and money.



O-SERIES TANKS OFFER A FAST, EASY AND CONVENIENT HYDROCARBON STORAGE SOLUTION

STANDARD FEATURES

INCOMING FUEL / PRODUCT

- 80nb Tanker fill pipework.
- Fire safe flanged ball valve, camlock adaptor & cap.
- Non return valve.
- Hydraulic overfill valve with optional unload pump.
- Internal pipe work serviceable.
- High level alarm; hazardous rated & battery powered.

OUTGOING FUEL / PRODUCT

- Anti-siphon valve (foot valve).
- Pipework terminates under walkway with ANSI flanges.
- 6" and 4" sockets in both manholes for the mounting of submersible pumps standard.
- Pump suction line including priming point plug.

PUMP BAY

- Pump bay complete with water/product drain valves.
- Internal access for hoses from pylon kits.
- Pylon kits with counter weights (optional).
- Lockable bund doors with rubber dust seal.
- Access ladder to work platform mounted on left or right hand side.
- Bund ventilations.
- Front earth connection.
- Built in safety hand rail system.
- Dual 50mm side wall cavity sockets.

*Conditions apply. Some features standard, some optional extras, depending on product range. Custom colours, coatings, dimensions and refuelling equipment packages are available upon request.

Orca Africa's tanks
are designed and certified to
operate in the global market



O-SERIES TANK SPECIFICATIONS

Dimensions are nominal only.
Alternative capacities available upon request.

MODEL	SFL Litres (US Gallons)	CAPACITY Litres (US Gallons)	LENGTH mm (Inches)	WIDTH mm (Inches)	HEIGHT mm (Inches)	TARE kg (lbs)	PUMP BAY
O-12	11,240 (2,969)	11,839 (3,128)	2,991 (118)	2,438 (96)	2,896 (114)	4,825 (10,637)	YES
O-20 NPB	17,274 (4,663)	18,183 (4,803)	2,991 (118)	2,438 (96)	2,896 (114)	4,730 (10,429)	NO
O-30	29,350 (7,753)	30,900 (8,163)	6,058 (239)	2,438 (96)	2,896 (114)	7,705 (16,987)	YES
O-38 NPB	35,380 (9,346)	37,250 (9,840) 37,250 (9,840)	6,058 (239)	2,438 (96)	2,896 (114)	7,550 (16,645)	NO
O-55	57,930 (15,303)	60,980 (16,109)	12,192 (480)	2,438 (96)	2,591 (102)	12,570 (27,712)	YES
O-68	65,570 (17,322)	69,020 (18,233)	12,192 (480)	2,438 (96)	2,896 (114)	13,570 (29,917)	YES
O-75 NPB	71,720 (18,946)	75,490 (19,942)	12,192 (480)	2,438 (96)	2,896 (114)	13,470 (29,696)	NO
O-90 NPB	85,975 (22,711)	90,500 (23,908) (23,908)	14,630 (576)	2,438 (96)	2,896 (114)	16,460 (36,288)	NO
O-100 NPB	95,900 (25,334)	101,000 (26,681)	14,630 (576)	2,438 (96)	3,200 (126)	17,260 (38,052)	NO
O-110 NPB	107,400 (28,372)	113,100 (29,878)	14,630 (576)	2,438 (96)	3,550 (140)	19,060 (42,020)	NO



STANDARD SPECIFICATION

- Double-walled tank designed and constructed to UL-142 and ULC-S601-14 compliance as standard.
- Supplied with all statutory signage.
- Safe fill level capacities from 11,240 litres to 107,400 litres.
- Curved tank roof finish externally.
- Unit based on ISO style 20', 40' or 48' foot cube shipping container foot print for easy lifting and transport.
- In-built tank access ladder and platform .
- Dual 2" manway tank access points.
- Updraft vent pipe.
- Calibrated aluminium anodized dipstick.
- Interstitial space monitoring point with anodized dip stick.
- Audible overfill protection alarm.
- 6" and 4 "sockets for installation of submersible pumps
- Extra paint thickness based on 250-300 microns for extra protection during harsh climates.
- Bunded cowling and dispensing area.
- Dual hose high mast retractable units.
- Lockable doors on pump and dispensing area.
- Suitable for fuel farm configuration (master and slave).
- Transportable via tilt tray, side loader or flatbed semi-trailer.

OPTIONAL EXTRAS

Additional extras or optional add-ons can be reviewed at any time before, during or after your tank purchase to help achieve the most from your fuel equipment systems. A fuel management system or inline filtration unit can improve equipment and longevity.

O-SERIES DISPENSING OPTIONS

- AC/DC electrical or engine driven dispensing equipment
- Bowser, dispenser units or retractable hose reel systems
- Heavy and / or light vehicle refueling
- Pump electrical switch box with start / stop / e-stop station
- Flow rates from 10.5gpm to 105gpm (105+gpm on request)
- Bulk fuel dispensing unit (quick fill for onsite service trucks)
- Fuel Management System compatible
- Outdoor payment terminal compatible (EFTPOS & credit card)

FLAMMABLE STORAGE

- Please check the local regulation and install relevant emergency vent for flammable storage.

CUSTOM BUILD REFUELLING PACKAGES

Please discuss your requirements, so we can create a fully-customised solution that meets your business needs.

MULTI COMPARTMENTS TANK

Orca Africa's tanks are based on container-sized footprints for ease of transportation and handling. They can be supplied with ready-to-use pumps, reels, meters and filtration. Standard and custom build add-on compartments can be specified to hold lubricants, coolant or waste oil as required. Multi products within same tank footprint are available if required. End mounted security cabinets can be fitted including steel or roller shutter doors and internal spillage trays, to house pipe work, pumps, gauging, alarms and controls.

4-Hour Fire Rated protection options available on O-SERIES TANKS. Check with ORCA AFRICA on specifications.

* Adblue and fuel additive products within tank design available on request. Additional bolt-on double-walled pump bays available on request.

OST-SERIES

Self-bunded Mobile Fuel Storage Tanks

Orca Africa's OST-Series Tanks are the best solution for the storage and dispensing of diesel, gasoline and lubricant oils – from 1,000 to 10,000 litres.



COMPATIBILITY



DIESEL



GASOLINE



LUBRICANTS



SOLVENTS

They offer a flexible solution to storing combustible liquid as well as improving fuel dispensing and management solutions. A practical design ensures a fast, easy and convenient installation in any location, indoors or outdoors.

ORCA AFRICA OST TANKS OFFER A FAST, EASY AND CONVENIENT FUEL STORAGE SOLUTION.

These mobile and modular units ensure fast and easy transportation to site, are easily relocatable and require minimal site works or preparation required. A place-fill-and-pump installation process offering versatility and speed on commissioning.

The freestanding design allows for 360° tank viewing and inspection. High-grade paint finish ensures longer durability in the elements.

SELF-BUNDED CONTAINMENT FOR ADDED SAFETY AND SECURITY.

Our self-bunded tanks are designed as integral secondary containment and therefore do not require independent bunds for leak containment. Self-bunded tank = SFL primary tank + interstitial space + secondary external tank.

STANDARD FEATURES

- Meets UL-142, ULC-S601-14 and UN-31-A/Y compliance as standard (UN-31-A/Y covers OST-1000 to OST-6000 only).
- Self-bunded tank construction consists of a 5mm primary steel tank and a 3mm secondary steel tank (5mm secondary tank on the OST-10000 model).
- Baffled internally to reduce product movement should the unit be moved with contents.*
- Accessible and removable tank manway for internal tank maintenance and cleaning.
- Recessed spill box/pump cabinet with pump mounting bracket. All housed under heavy duty lockable lid for additional fuel security.
- Sectional cut-outs on sides of spill box to allow flexible hoses or pipework to external requirements (i.e: generators).
- Curved roof feature for water drainage to top of tank.*
- Complete with aluminium gauged dipsticks, 1 x galvanized updraft vent breather system and multiple port fittings.
- Air pressure tested prior to leaving our factory.
- Mobile and modular design allows for ease of transportation.
- 250-300 Micron thickness 'WHITE' paint finish as standard. Other colour options are available upon request.
- Flammable and combustible liquid safety labels and decals supplied as standard.
- Forklift pockets and certified tie down/lifting points at each corner.

*Conditions apply. Some features standard, some optional extras, depending on product range. Custom colours, coatings, dimensions and refuelling equipment packages are available upon request.

Orca Africa's tanks
are designed and certified to
operate in the global market



OST-SERIES TANK SPECIFICATIONS

Dimensions and volumes are nominal only.
Alternative capacities available upon request.

MODEL	SFL Litres (US Gallons)	CAPACITY Litres (US Gallons)	LENGTH mm (Inches)	WIDTH mm (Inches)	HEIGHT mm (Inches)	TARE kg (LBS)	BAFFLE
OST-1000	1,000 (264)	1,160 (306)	1,100 (43)	1,864 (73)	1,309 (52)	870 (1,918)	YES
OST-2000	1,890 (500)	2,000 (528)	2,274 (90)	1,394 (55)	1,309 (52)	1,090 (2,403)	YES
OST-2500	2,500 (660)	2,684 (709)	2,274 (90)	1,674 (66)	1,309 (52)	1,280 (2,822)	YES
OST-4500	4,500 (1,189)	4,800 (1,268)	2,774 (109)	2,274 (90)	1,309 (52)	1,790 (3,946)	YES
OST-6000	6,000 (1,585)	6,200 (1,638)	3,574 (141)	2,274 (90)	1,309 (52)	2,180 (4,806)	YES
OST-10000	10,000 (2,642)	11,000 (2,906)	6,058 (239)	2,438 (96)	1,295 (51)	4,000 (8,818)	YES



Tank Manway:
Recessed Spill Box Area
**Layout may change with product evolution.*

4-Hour Fire Rated protection options available on OST-SERIES TANKS. Check with Orca Africa on specifications.

The storage of flammable liquids can be accommodated with the relevant venting and accessory change. Remember to check with local authorities. Dimensions are nominal only. Alternative capacities available upon request.

MANWAY (INSIDE LID)

- 1 x 2" Fill Point
- 1 x 2" Dip Point
- 3 x 2" Suction Ports (BSP & NPT)
- 2 x 2" Return Ports (BSP & NPT)
- 2 x 1" Suction Ports (BSP & NPT)
- 2 x 1" Return Ports (BSP & NPT)

MOBILE AND MODULAR

- OST-1000 to OST-6000: Forklift pockets, certified tie down/lifting points at each corner.
- OST-10000: ISO corner castings and skid tray base for tilt tray or swing lift loading.
- Tanks can be stacked 4 high empty, 2 high full.

EXTERIOR OF TANK

- 1 x 2" Interstitial Dip / Vent
- 1 x 2" Suction Port (BSP)
- 1 x 2" Spare Port
- 2 x 4" Submersible Pump Provision (BSP & NPT)
- 1 x 2" Free Vent Port

OS-Series

Stationary Fuel Storage Tanks

Orca Africa’s OS-Series Stationary Fuel Tanks are a value-engineered solution for the storage and dispensing of diesel, gasoline and lubricant oils – from 1,045 to 10,000 litres.



COMPATIBILITY



DIESEL



GASOLINE



LUBRICANTS



SOLVENTS

They offer a flexible solution to storing combustible liquid as well as improving fuel dispensing and management solutions. A practical stationary design ensures a fast, easy and convenient installation in any location, indoors or outdoors.

OS-SERIES TANKS ARE A VALUE-ENGINEERED FUEL STORAGE SOLUTION

These modular units ensure fast and easy transportation to site, with minimal site works or preparation required. A place, fill-and-pump installation process offering versatility and speed on commissioning.

The freestanding ‘cube style’ design allows for 360° tank viewing and inspection. High-grade paint finish ensures longer durability in the elements.

DURABLE STATIONARY DESIGN WITH DOUBLE-WALL CONTAINMENT FOR ADDED SAFETY AND SECURITY.

Our double-walled tanks are designed as integral secondary containment and therefore do not require independent bunds for leak containment. Double-walled tank = SFL primary tank + interstitial space + secondary external tank.

STANDARD FEATURES

- Designed for stationary storage of product. Meets UL-142, ULC-S601-14 compliance as standard.
- Double-walled tank construction consists of a 4mm primary steel tank and a 4mm secondary steel tank.
- Baffled internally for structural integrity and to reduce product movement.
- Accessible and removable tank manway for internal tank maintenance and cleaning.
- Recessed spill box area under lockable lid on gas struts to secure transfer pump.
- Sectional cut-outs on sides of spill box to allow flexible hoses or pipework to external requirements (i.e. generators).
- Complete with aluminium gauged dipsticks, 1 x galvanized updraft vent breather system and multiple port fittings.
- Air pressure tested prior to leaving our factory.
- Mobile and modular design allows for ease of transportation when empty.
- 250-300 Micron thickness ‘WHITE’ paint finish as standard. Other colour options are available upon request. *
- Flammable and combustible liquid safety labels and decals supplied as standard.
- Certified tie down/lifting points at each corner.
- 2 No. forklift pockets to all sides.

*Conditions apply. Some features standard, some optional extras, depending on product range. Custom colours, coatings, dimensions and refuelling equipment packages are available upon request.

MANWAY (INSIDE LID)

- 1 x 2" Fill Point
 - 1 x 2" Dip Point
 - 1 x 3" Free port
 - 3 x 2" Suction Ports
 - 3 x 1-1/2" Return Ports
- Arrangement/set-up dependent on tank size*

MOBILE AND MODULAR

- Practical and efficient ‘cube style’ modular design
- 2 No. forklift pockets to all sides
- Tie down/lifting points at each corner
- Tanks can be stacked 4 high empty

EXTERIOR OF TANK

- 1 x 2" Interstitial Dip / Vent
 - 1 x 2" Vent Port
 - 1 x 3" Free port
 - 4 x 2" Free ports
- Arrangement/set-up dependent on tank size*

Orca Africa's tanks
are designed and certified to
operate in the global market



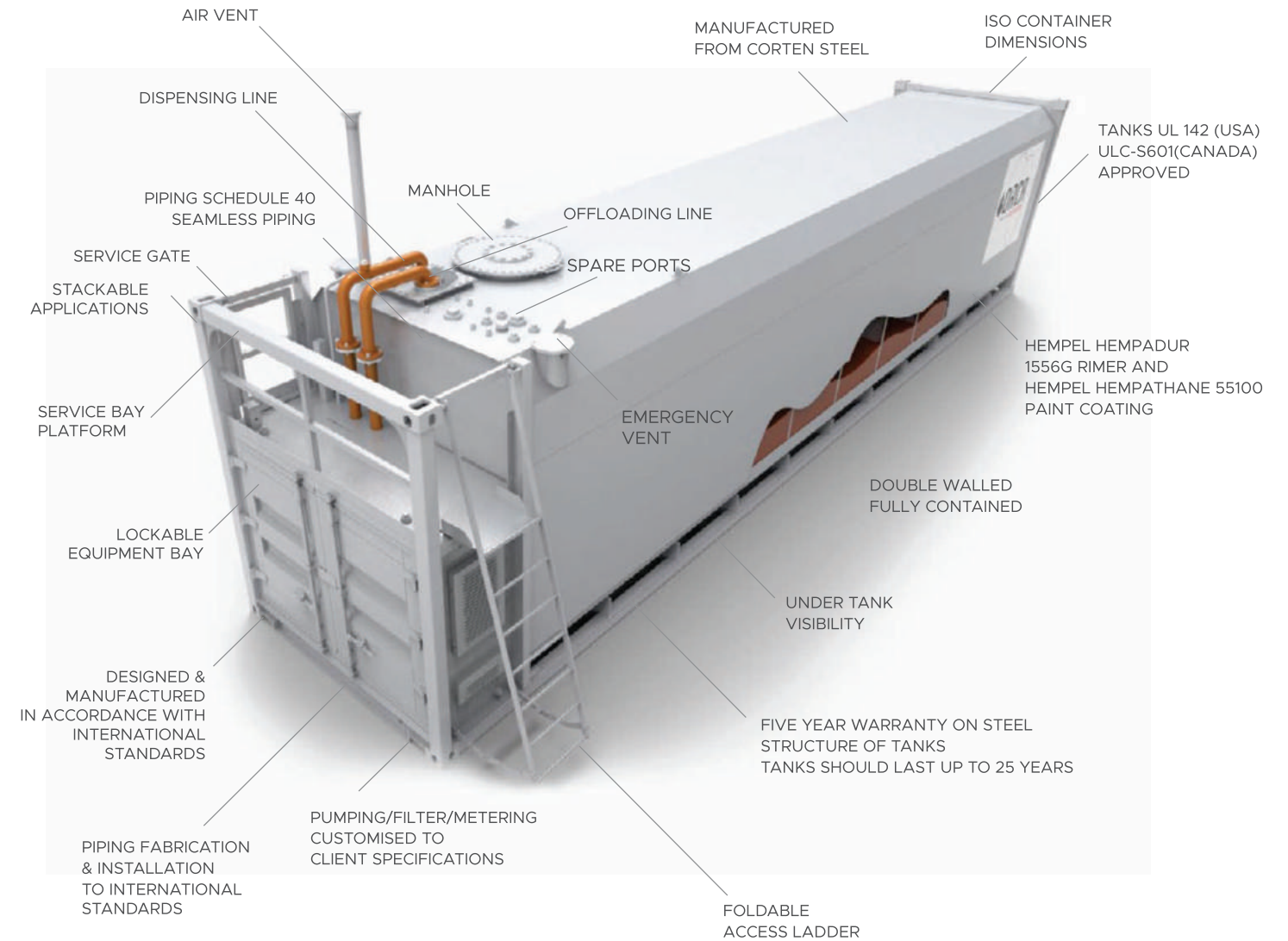
TANK ARRANGEMENT

Perspective showing the Tank Arrangement

ORCA OS-SERIES TANK SPECIFICATIONS

Dimensions are nominal only.
Alternative capacities available upon request.

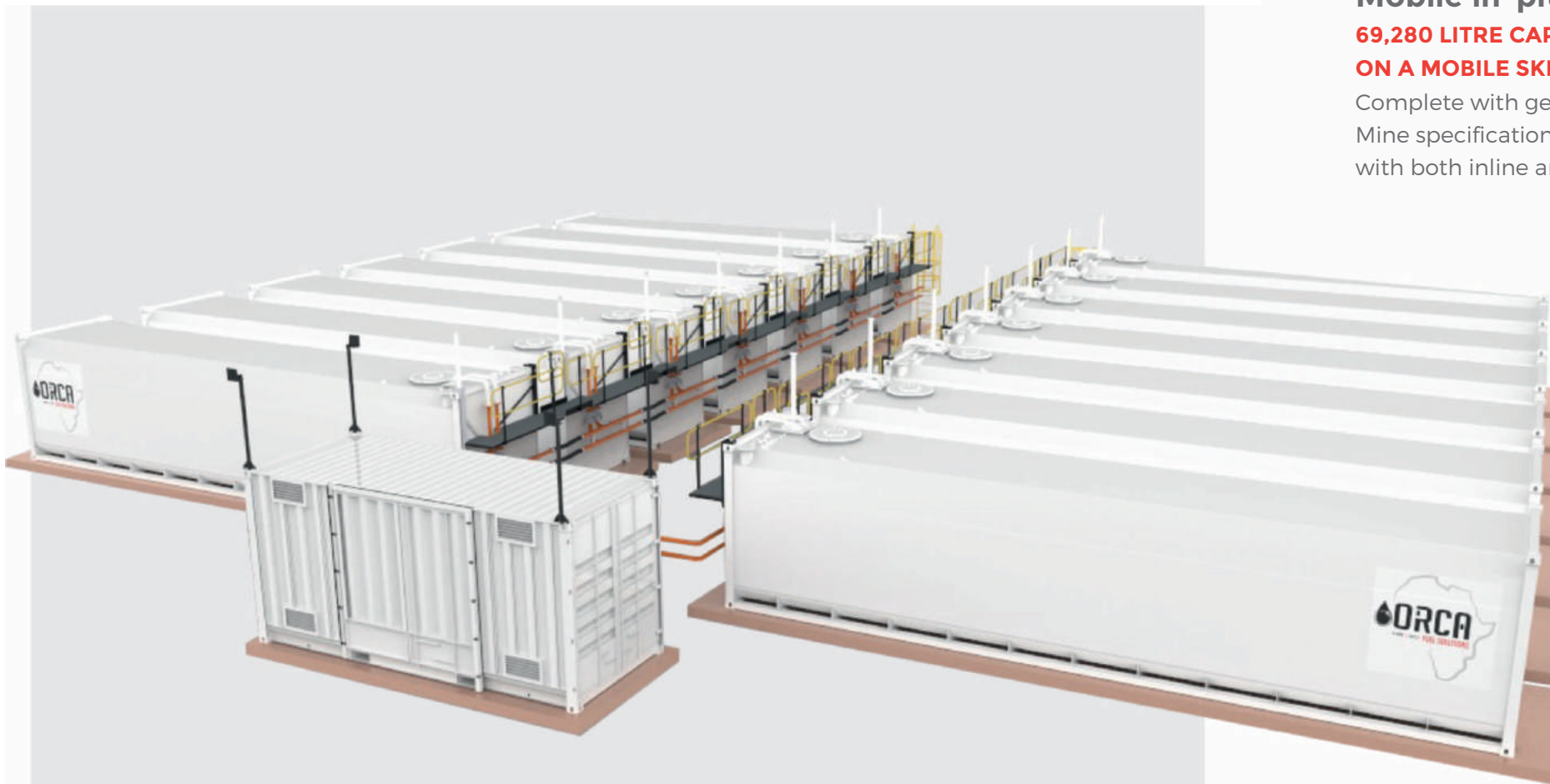
MODEL	SFL US Gallons (Litres)	CAPACITY US Gallons (Litres)	LENGTH Inches (mm)	WIDTH Inches (mm)	HEIGHT Inches (mm)	TARE LBS (kg)	BAFFLE
OS-1100	276 (1,045)	291 (1,100)	54 (1,374)	43 (1,086)	50 (1,270)	1,360 (617)	NO
OS-2250	554 (2,100)	594 (2,250)	90 (2,294)	43 (1,086)	50 (1,270)	1,991 (903)	YES
OS-3300	818 (3,100)	872 (3,300)	90 (2,294)	61 (1,546)	50 (1,270)	2,429 (1,102)	YES
OS-4500	1,122 (4,250)	1,189 (4,500)	90 (2,294)	82 (2,084)	50 (1,270)	3,131 (1,420)	YES
OS-5500	1,374 (5,200)	1,453 (5,500)	98 (2,496)	90 (2,294)	50 (1,270)	3,377 (1,532)	YES
OS-6600	1,651 (6,250)	1,744 (6,600)	117 (2,966)	90 (2,294)	50 (1,270)	3,904 (1,771)	YES
OS-8800	2,205 (8,350)	2,325 (8,800)	154 (3,916)	90 (2,294)	50 (1,270)	4,822 (2,187)	YES
OS-11000	2,642 (10,000)	2,906 (11,000)	192 (4,867)	90 (2,294)	50 (1,270)	5,820 (2,640)	YES



ENGINEERED SOLUTIONS

Custom-built and Engineered Solutions

The experience and expertise of Orca Africa's in-house design and engineering team are available to design your unique fuel storage and dispensing solution – optimising refuelling time and ensuring your fuel is where you need it, when you need it.



Fuel Farm

**850,000 LITRE FUEL FARM FOR DIESEL WITH
A CENTRALISED MODULAR PUMP HOUSE**

Containing all offloading and dispensing equipment



Mobile in-pit refuelling

**69,280 LITRE CAPACITY DIESEL TANK
ON A MOBILE SKID FOR MINING**

Complete with generators, generator feed equipment.
Mine specification offloading and dispensing equipment
with both inline and offline kidney filtration.



Turnkey Industrial Refuelling Solutions

69,280 LITRE CAPACITY ABOVEGROUND DIESEL TANK

Complete with mine spec offloading at 1200 l/m and
dual dispensing at 80 and 300 l/m.

FUEL MANAGEMENT

Customised Fuel Authentication Technologies

Choose the way that suits your process for people to access fuel

SMART-TAG AUTOMATIC VEHICLE IDENTIFICATION

The nozzle transceiver uses innovative positional tracking technology to prevent fuel theft without causing driver frustration from needless fuel shutoffs. SmartTag is cost effective for rapid deployment across the entire fleet, with unobtrusive, easy-to-install RFID tags.

Reports and Data
Automatically available via
a web browser...
anywhere, anytime.

SmartFuel GEN 3
The hub of 100%
reliable fuel data
and reporting
with flexible
authentication.



SMART-FILL ID BUTTON READING WAND.

Improves cost savings and data integrity by...

- Minimising misuse / swapping / loss / theft of keys.
- Easily installed to existing or new systems.
- Uses a very strong, long life, fuel resistant coiled cable.
- Cable length is approx 1.8M stored and 5.4M extended.
- Mounts to the vehicle with 2 screws or rivets, plus you can use strong glue if required.



NFC KEYS AND FOBs

Easy user or vehicle identification is provided with long lasting NFC fobs or proximity cards.



MAGNETIC SWIPE CARDS

Utilise your existing fuel cards as user ID. Simply swipe to access fuel. Our magnetic card readers are the toughest available, with an IP67 rating, they are dust and waterproof.



HID CARD READER

Use existing employee access control cards to identify who has taken fuel and when.



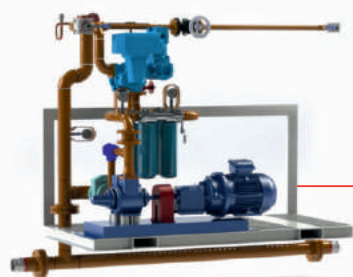
PUMP PACKAGES

The Smartest Delivery and Filtration to suite your needs

LOADERS

TANKER-TO-TANKER LOADING

- Flow rates ranging from 300 L/pm to 1200 L/pm.
- Wide range of filtration and metering options.



REFUELLERS

MEDIUM AND INDUSTRIAL REFUELLING

- Flow rates ranging from 80 L/pm to 450 L/pm.
- Medium and heavy vehicle refuelling.



GENERATOR FEEDS

LOCAL AND INDUSTRIAL GENERATOR FEED

- Flow rates ranging from 32 L/pm to 110 L/pm.
- Manual and automated options.



HOME-BASE REFUELLING

LIGHT AND MEDIUM VEHICLE REFUELLING

- Flow rates ranging from 40 L/pm to 130 L/pm.
- Refuel more than one product at a time.



AVIATION

AIRCRAFT REFUELLING (Jig Compliant)

- Flow rates ranging from 80 L/pm to 500+ L/pm.
- Available as diesel- or electrically-driven.

CERTIFICATIONS

Designed and certified to operate on a global scale

Orca Africa's tanks and products are designed and certified to give you absolute peace-of-mind, whether operating in your own country, or abroad.



ULC-S601-14

ULC-S601-14: The Canadian acceptable standard for shop fabricated steel aboveground tanks for flammable and combustible liquids.



NFPA: National Fire Protection Association: Flammable and combustible liquids code applicable in the USA.

AS1940

AS 1940: Australian standard for the storage and handling of flammable and combustible liquids.



UL142

UL: The USA / NA Recognized Standard for Safety: steel aboveground tanks for flammable and combustible liquids.



Transport Canada

TRANSPORT CANADA: Department responsible to serve the public interest for developing regulations, policies, programs and services to promote safe, secure, efficient and environmentally responsible transportation in Canada.

AS1692

AS 1692: Australian standard for steel tanks for flammable and combustible liquids.

VLAREM II

VLAREM II: Flemish environmental regulation; Chapter 5.1 for oil or petroleum products.



UN-31-A/Y

UN IBC 31 A/Y: The United Nations approved international standard on design, manufacture and use of intermediate bulk containers for the transportation of dangerous goods. The UN IBC 31A/Y is applicable to the use of specially fabricated steel tanks that allows the legal transport of dangerous goods by road, rail and sea, packaging groups II & III.



UN IMDG: Carriage of dangerous goods by sea is regulated in order reasonably to prevent injury to persons or damage to ships and their cargoes. Carriage of marine pollutants is primarily regulated to prevent harm to the marine environment. The objective of the IMDG code is to enhance the safe carriage of dangerous goods while facilitating the free unrestricted movement of such goods.

PROJECTS

Recent Projects and Installations by Orca Africa



Mine Inpit Refuelling



Light Vehicle Refuelling Installation



Dual Function: Power Generation and Light Vehicle Refuelling



Pump House

PROJECTS

Recent Projects and Installations by Orca Africa



Lubricant Skids



Fuel Farm



Depot Refuelling Installation



Mine Diesel Refuel Installation

THE ORCA TEAM

Level 2 BBBEE Contributor | 100% Woman Owned

Our people are the foundation of our business. Our dedication to providing a customised fuel solution requires that we have a team of individuals that are ready to meet every challenge.

With combined experience of over a hundred years in the tank and pump sector in Africa, we know what it takes to build strong and reliable solutions for our clients.



Welcome to Orca Africa

OUR CLIENTS

We've serviced clients throughout Africa, and beyond...

Africa's leader in **FUEL STORAGE SOLUTIONS**
and **INNOVATIVE FUEL MANAGEMENT**



Ask **Orca Africa** about...

- ABOVEGROUND TANKS
- TRANSPORTABLE TANKS
- STATIONARY TANKS
- AVIATION FUEL TANKS
- FUEL MANAGEMENT
- FUEL TRAILERS
- GREASE BINS
- FUEL FARMS
- IN-PIT REFUELLING
- REFUELLING SKIDS
- FILTRATION SKIDS
- ENERGY SOLUTIONS

CONTACT US TODAY FOR YOUR
TURNKEY FUEL & ENERGY SOLUTION

Office: +27 (0)11 626 3607 | **E-mail:** info@orcafuels.co.za
Visit www.orcafuels.co.za for more information.



GET SOCIAL [in](https://www.linkedin.com/company/orca-fuel-solutions) orca-fuel-solutions [f](https://www.facebook.com/OrcaFuelSolutions) Orca Fuel Solutions [ig](https://www.instagram.com/OrcaFuels) OrcaFuels [t](https://twitter.com/OrcaFuel) @OrcaFuel [y](https://www.youtube.com/OrcaFuelSolutions) Orca Fuel Solutions